

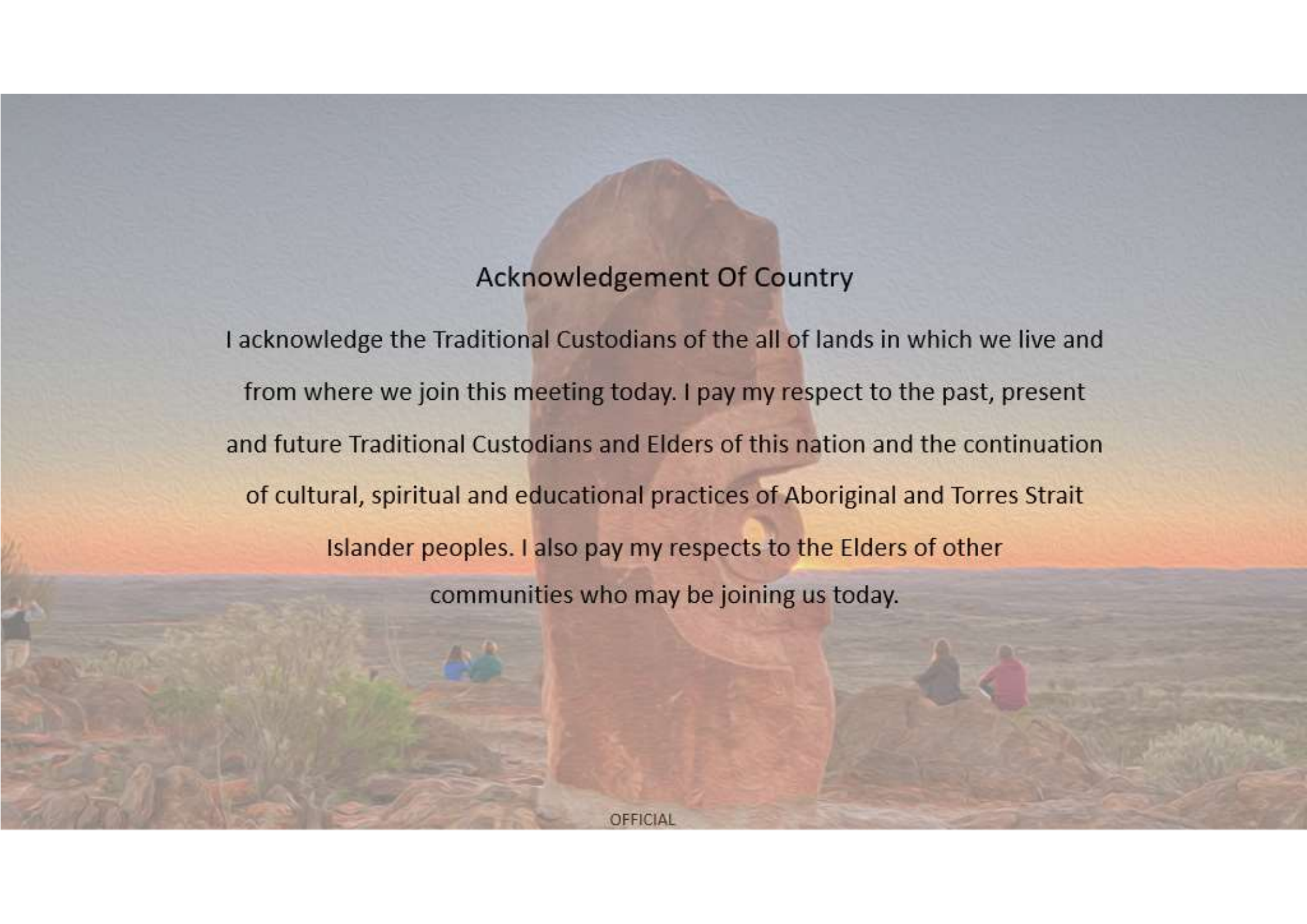
Wednesday 20 October, 2021

---

# COVID + Pathway Learning Network webinar series

Webinar 4: Paediatric COVID-19 Positive Care Pathways

**OFFICIAL**

The background image shows a coastal landscape at sunset. A large, reddish-brown rock formation with a circular hole in the center stands prominently in the middle ground. Several people are sitting on rocks in the foreground, looking out towards the ocean. The sky is a mix of orange, yellow, and blue, and the water is calm.

## Acknowledgement Of Country

I acknowledge the Traditional Custodians of the all of lands in which we live and from where we join this meeting today. I pay my respect to the past, present and future Traditional Custodians and Elders of this nation and the continuation of cultural, spiritual and educational practices of Aboriginal and Torres Strait Islander peoples. I also pay my respects to the Elders of other communities who may be joining us today.

---

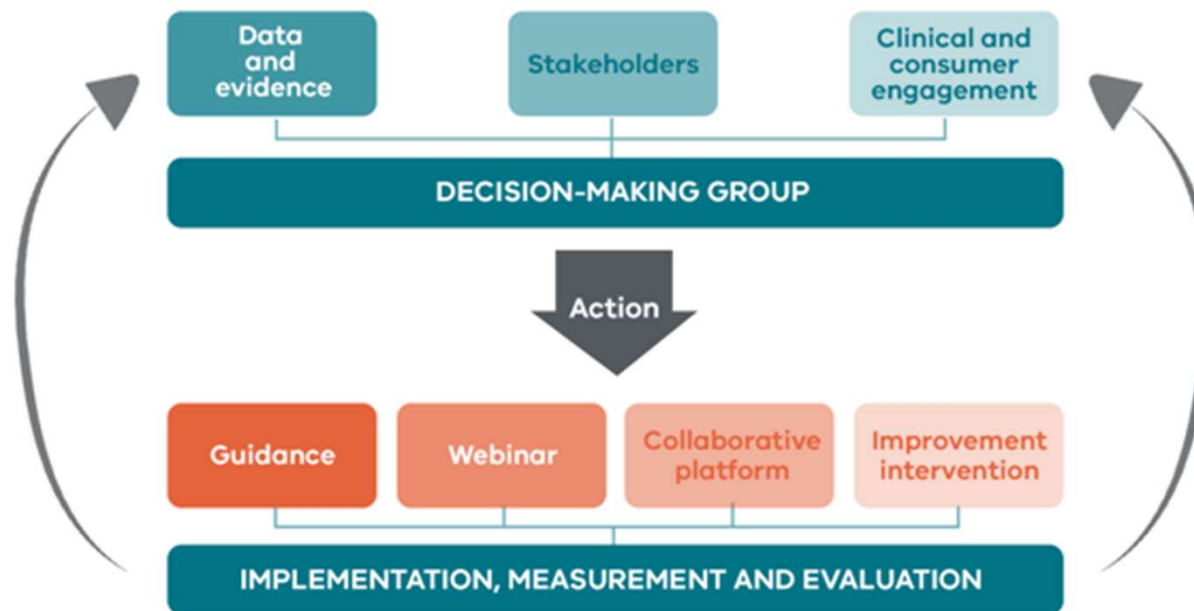
## Webinar series purpose

- Showcase local clinicians who will share their experiences delivering the COVID + Pathways model
- Provide a forum for sharing and collaboration to support the delivery of best practice

**OFFICIAL**

---

## COVID + Pathway Learning Network

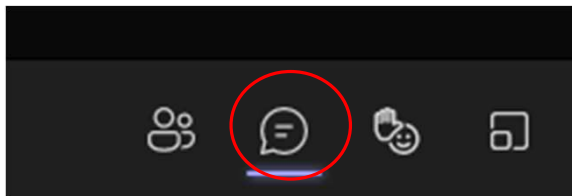


**OFFICIAL**

---

## Before we start

Throughout the webinar you can ask questions by typing your question into the chat.



There will also be a dedicated time for questions and discussions.

The presenters will do their best to answer your questions at the end of the presentation.

This session will be recorded and made available on the SCV website.

**OFFICIAL**

---

# Overview

Topic	Presenter
COVID + Pathway update	Shannon Wight Executive Lead, COVID + Pathways, Department of Health
Medium Risk COVID+ Pathway	Professor Mike Roberts, CEO Safer Care Victoria
Questions	
Paediatric COVID-19 Positive Care Pathways	Dr Suzanne Boyce Paediatrician, Hospital in the Home and General Medicine, The Royal Children's Hospital Melbourne
Questions	

---

**OFFICIAL**

---

# COVID + Pathways update

**Shannon Wight**— Executive Director, COVID + Pathways Program  
& Executive Director Clinical Operations, Eastern Health

**OFFICIAL**

---

# C+P program lessons of the week

## 1.GP engagement and relationship building

- the rapid scaling of the C+P program requires greater GP capacity to be the front line force in maintaining care for C+P clients in the community
- to do this there is proactive engagement with PHNs to maintain a register of GPs in the PHN/HSP catchment, and make this registry available to HSPs to enable load sharing
- development of a primary care engagement plan across the HSPs
- work with HSPs to build relationship with GPs and enable that handover of care to the GP community and let hospitals treat the COVID acute – *this is vital for the predicted numbers for Victoria.*

**OFFICIAL**



---

## C+P program lessons of the week

### 2. Standardisation and scalability

- ongoing work with Health Direct to support the triage of C+ client intake assessments and implement a standardised risk stratification and triage process across the 3 metro HSPs, which enables
  - streamlined prioritisation ensuring those most at risk are assessed as soon as can be (enabler for Sotrovimab)
  - third party provider for intake assessments permits precious health service workers back to caring for acute patients
  - clinical governance of the C+ client on their journey throughout their care

**OFFICIAL**

---

# Medium risk COVID + Pathway Update

Professor Mike Roberts

**OFFICIAL**

---

## SCV - Medium risk COVID + Pathway

- SCV and IHI are partnering with health services to develop a standardised model to enable consumers on the medium risk COVID+ pathway to be able to effectively self-manage and monitor their symptoms at home, with clinical support and treatment provided as necessary.
- SCV will support health services to locally implement strategies that support medium-risk COVID+ patients to receive care at home safely, by using pulse oximetry and home oxygen when clinically appropriate.
- We will begin testing a model within the next week with a few health services.
- If your health service would like to be involved in testing this model, please contact [Improvement@safercare.vic.gov.au](mailto:Improvement@safercare.vic.gov.au)

**OFFICIAL**

---

# Questions

**Please type your question in the chat**

**OFFICIAL**



---

# Paediatric COVID-19 Positive Care Pathways

**Dr Suzanne Boyce-** Paediatrician, Hospital in the Home and General Medicine, The Royal Children's Hospital Melbourne

**OFFICIAL**

---

## Paediatric COVID + Care Pathways

- Team effort!
  - Thanks to Shidan Tosif, Sarah McNab, RCH HITH team, Sarah Jame, Kathryn Whitfield and many others
- Parallel bodies of work
  - RCH COVID- 19 Clinical practice guideline
  - RCH Kids Health Info
  - Many more... ANZPID, Haematology
- Paediatrics not just little adults
- Build upon local and interstate (and overseas!) experience
- RCH and Monash Children's streaming hospitals + HITH

**OFFICIAL**

---

## Victorian and RCH paediatric COVID19 activity

### Victorian paediatric COVID19:

- 16,743 total for entire pandemic
- ~ 13,000 in 2021 (starting end of May, all delta)
- 6,113 active currently

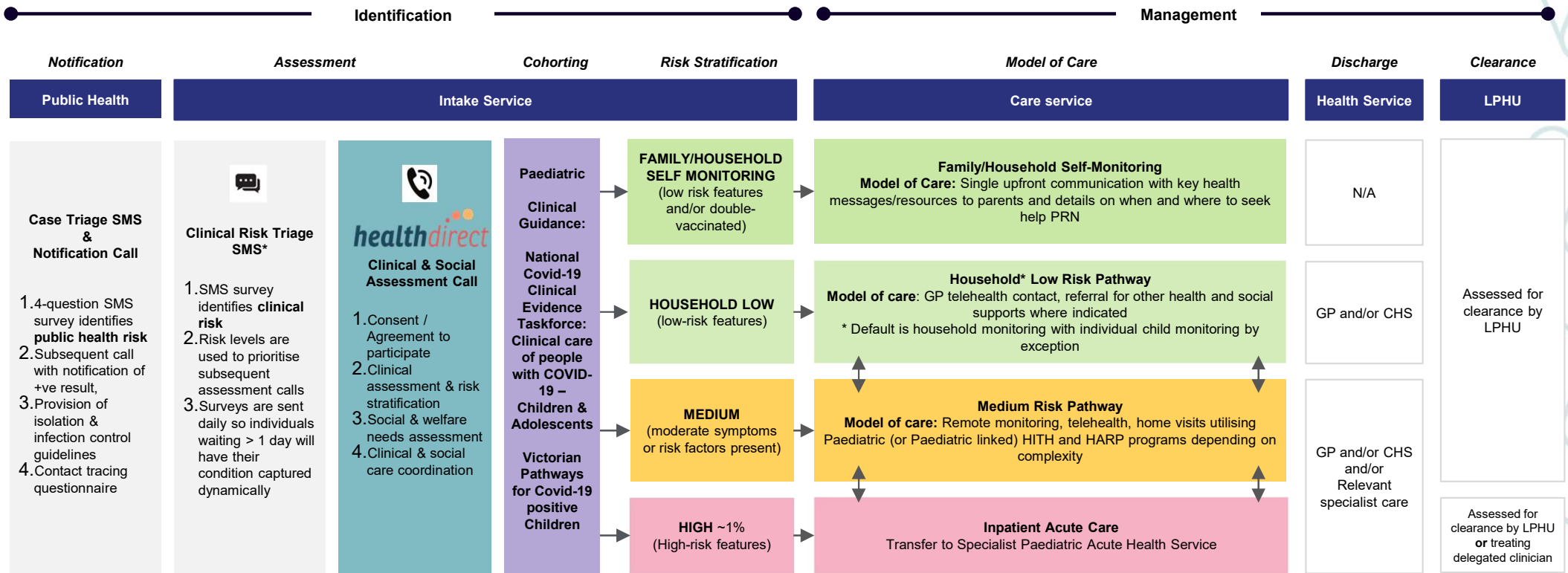
### RCH activity 2021 (up to 12<sup>th</sup> Oct)

- 50 in-hospital patients (4 social, 6 incidental)
  - Infant and adolescent peaks
- 9 PICU
- 39 direct to HITH
- Additional 34 step down to HITH from in-hospital

**OFFICIAL**

# Special cohort: Paediatric & Adolescent Care Pathway

## Overview of Pathway



Covid-19 Positive Pathways

OFFICIAL

October 2021 16



# Special cohort: Paediatric & Adolescent Care Pathway

## Overview of Paediatric and Adolescent Clinical Risk Stratification

COVID-19 Positive Paediatric & Adolescent Patients		Risk Category			
		Family Self-Monitoring	Low	Medium	High
Conditions		Requires all determinants (vaccination status, symptoms, comorbidities and Psychosocial) be met.	Requires Age, Symptoms and Psychosocial all to be met.	Only <b>ONE</b> of Age, Comorbidity or 'Unwell' in a SYMPTOMATIC child. (Asymptomatic children are Low Risk)	Requires Symptoms and/or Social only.
Determinants	Age	> 1 month (corrected)	>1 month (corrected)	< 1 month corrected (if febrile, high risk)	Any
	Vaccination Status	Double vaccinated OR Any (if ineligible)	Any	Any	Any
	Symptoms*	<ul style="list-style-type: none"> <li>Asymptomatic</li> <li>Normal work of breathing</li> <li>Normal feeding and hydration</li> </ul>	<ul style="list-style-type: none"> <li>Asymptomatic</li> <li>Normal or mild work of breathing, OR</li> <li>Normal or mildly reduced feeding or hydration OR mild gastro symptoms</li> </ul>	<ul style="list-style-type: none"> <li>Moderate symptoms</li> <li>Increased work of breathing OR</li> <li>Poor feeding and hydration (~50+% of normal) (but not requiring NG/IV fluids) OR multiple episodes of gastro symptoms</li> <li>AND normal conscious state</li> </ul>	<ul style="list-style-type: none"> <li>Moderate to severe work of breathing OR</li> <li>Febrile neonate (&lt; 1 month corrected)</li> <li>Very poor feeding and hydration (&lt;50% of normal) OR drowsy/abnormal conscious state OR persistent/severe chest pain</li> <li>Kawasaki's Disease/PIMS-TS symptoms (Rash with Fever)</li> </ul>
	Comorbidities*	Nil		<ul style="list-style-type: none"> <li>Immunosuppression</li> <li>Severe/complex medical, cardiac, respiratory or neurodevelopmental chronic disease</li> <li>Significant disability</li> <li>Extreme obesity (&gt; 95 percentile)</li> <li>Afebrile neonate (&lt;1 month corrected)</li> <li>Pregnancy (transfer to Maternity Pathway)</li> </ul>	Any
	Social	No barrier to home isolation Well AND vaccinated parent(s)/guardian(s)	No barrier to home isolation	No barrier to home isolation In out of home care (consider on specific circumstances)	Barrier to home isolation (only if other options for Emergency Accommodation are exhausted)
Plan		Family/Household Self Monitoring	Household Low Risk Pathway	Medium Risk Pathway	Acute inpatient Care

\*See Appendix for details of Symptoms and Comorbidities

Covid-19 Positive Pathways

OFFICIAL

October 2021<sup>7</sup>

# Special cohort: Paediatric & Adolescent Care Pathway

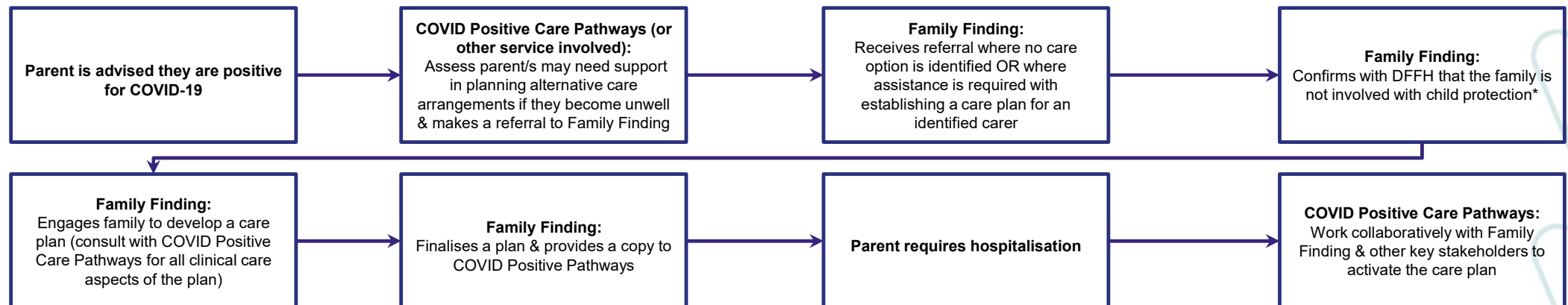
## Overview of Family Finding Service

For single parent families, or families where both parents require hospitalisation due to COVID-19, there is sometimes no one available or willing to care for their children who are almost always COVID-19 positive or suspected COVID-19 positive (SCCOVID). Family Finding is a service that can support parent(s) / guardian(s) plan alternative arrangements for their children with family or friends in the event they require hospitalisation due to COVID-19.

### Understanding the role of Family Finding:

- Support parent(s) / guardian(s) who are diagnosed with COVID-19 to identify suitable carers to help provide care for their children in the event they require hospitalisation.
- Work with the COVID Positive Care Pathways team to ensure carers are aware of:
  - o **The clinical risks of caring for children who are COVID positive or SCCOVID**
  - o **Supports available to provide ongoing clinical care and oversight for the carer and the children**
- Oversee and monitor the care plan once it is activated due to parent/s being hospitalised, including provision of support and relief to the carer and the children for the duration of the care arrangement
- Support the return of the child to the care of the parent(s) / guardian(s) once they are well

### How does Family finding operate?



*\*Families involved with child protection are not in scope for Family Finding and should be referred to the local Department of Families Fairness and Housing child protection office*

# Covid-19 Positive Pathways

OFFICIAL

October 2021<sup>18</sup>

---

# Questions

**Please type your question in the chat**

**OFFICIAL**



---

## Survey

Please complete our short survey to help us identify future topics for the COVID + Pathway Learning Network webinar series.

[Survey](#)

**OFFICIAL**

---

## Future webinars

- Interested in sharing your services' experiences, innovations and learnings in delivering the COVID+ Pathway at an upcoming webinar?
- Did not receive this webinar invite directly and would like to register for future webinars?

Email us:

[centresofclinicaexcellence@safercare.vic.gov.au](mailto:centresofclinicaexcellence@safercare.vic.gov.au)

**OFFICIAL**