

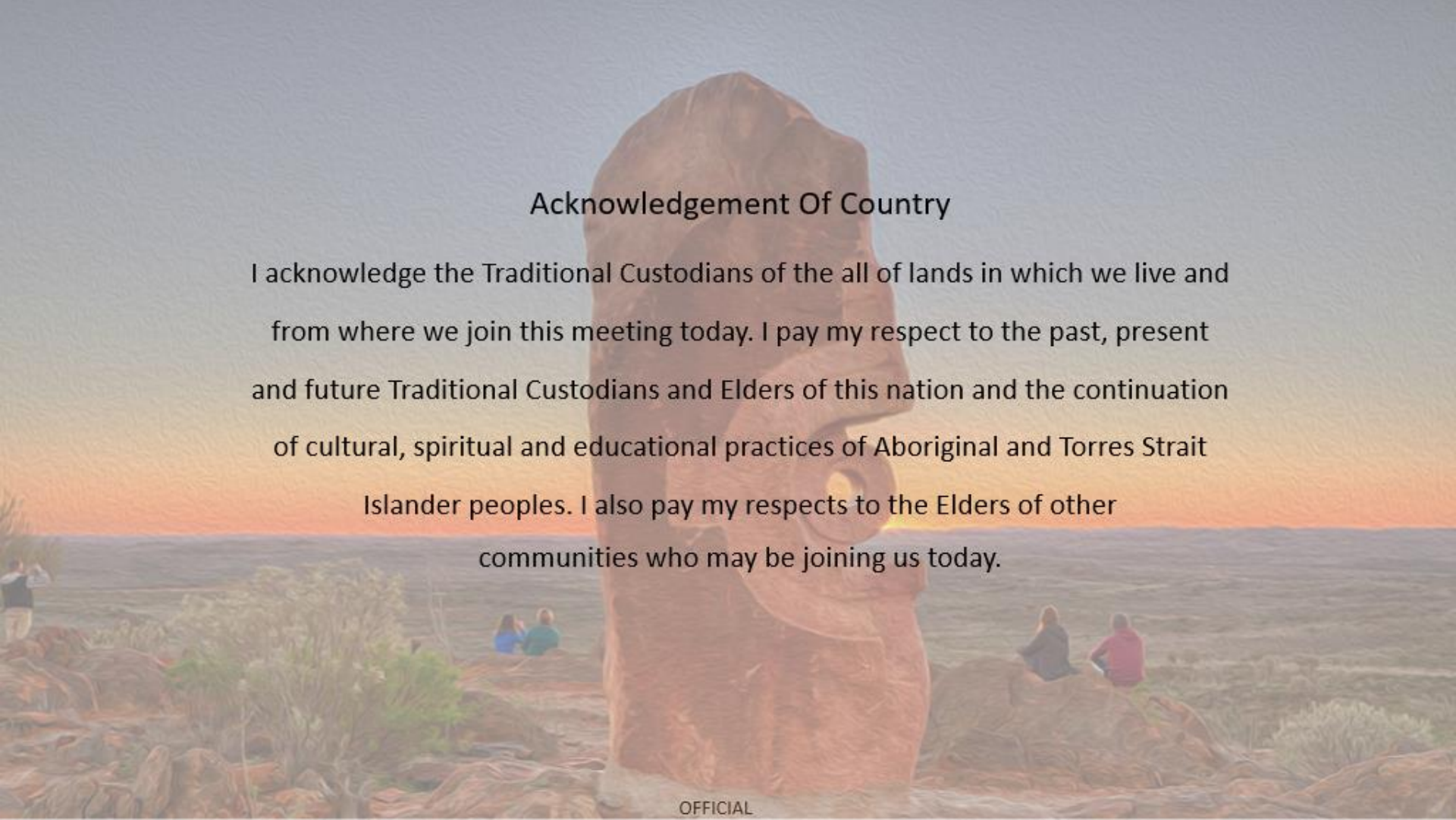
Wednesday 13 October, 2021

---

# COVID + Pathway Learning Network webinar series

Webinar 3: COVID + Pathways Experience and Learnings from the ED - The  
Royal Melbourne Hospital

**OFFICIAL**



## Acknowledgement Of Country

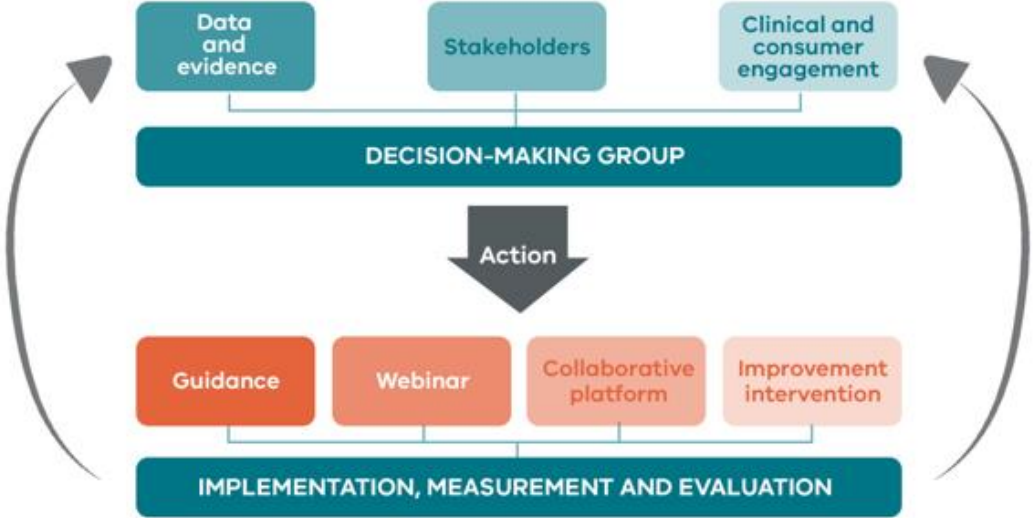
I acknowledge the Traditional Custodians of the all of lands in which we live and from where we join this meeting today. I pay my respect to the past, present and future Traditional Custodians and Elders of this nation and the continuation of cultural, spiritual and educational practices of Aboriginal and Torres Strait Islander peoples. I also pay my respects to the Elders of other communities who may be joining us today.

---

## Webinar series purpose

- Showcase local clinicians who will share their experiences delivering the COVID + Pathways model
- Provide a forum for sharing and collaboration to support the delivery of best practice

# COVID + Pathway Learning Network

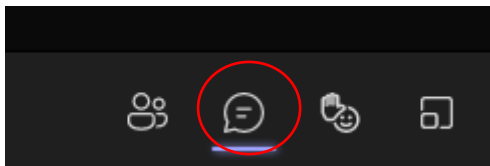


**OFFICIAL**

---

## Before we start

Throughout the webinar you can ask questions by typing your question into the chat.



There will also be a dedicated time for questions and discussions.

The presenters will do their best to answer your questions at the end of the presentation.

This session will be recorded and made available on the SCV website.

---

# Overview

Topic	Presenter
<b>COVID + Pathway update</b>	Shannon Wight Executive Lead, COVID + Pathways, Department of Health
<b>Questions</b>	
<b>Getting people home from ED</b>	Assoc. Prof. Mark Putland Director, Department of Emergency Medicine - RMH
<b>Questions</b>	

---

---

# COVID + Pathways update

**Shannon Wight**— Executive Lead, COVID + Pathways Program  
& Executive Director Clinical Operations, Eastern Health

---

# Questions

**Please type your question in the chat**



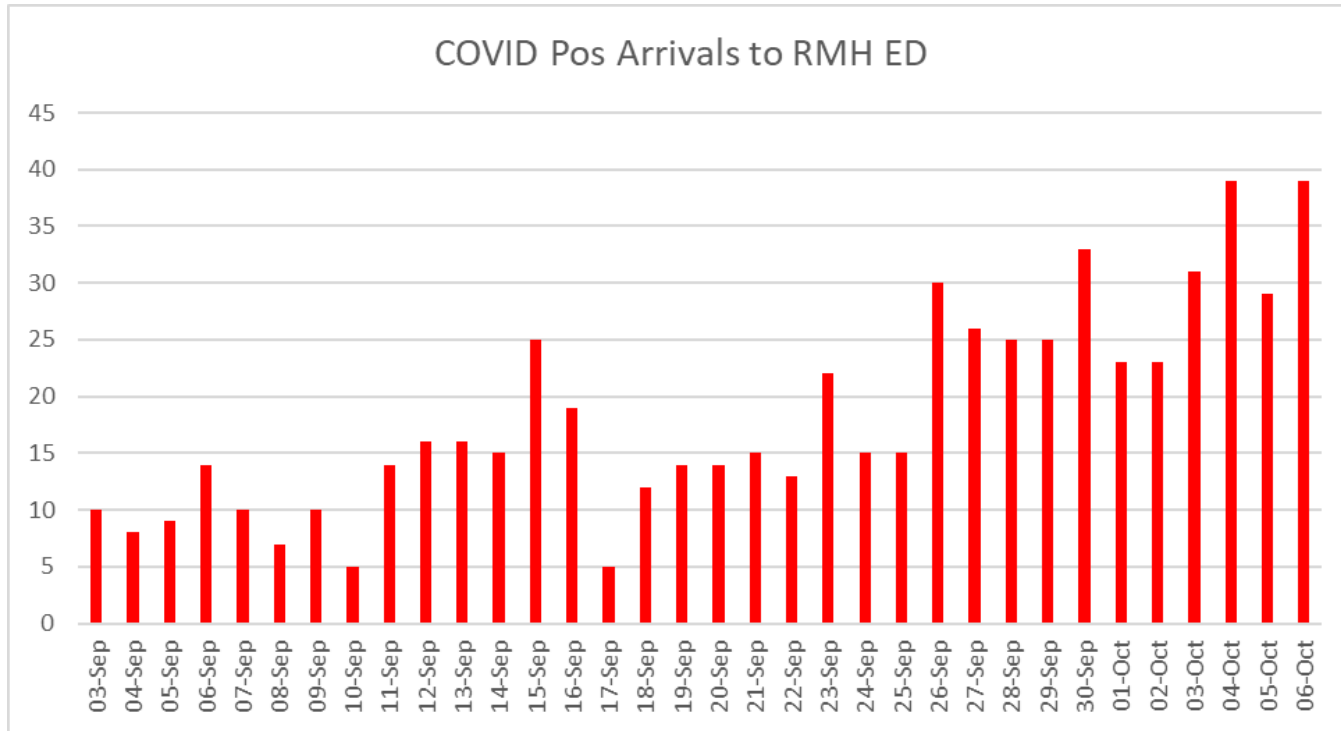
# Getting people home from the ED

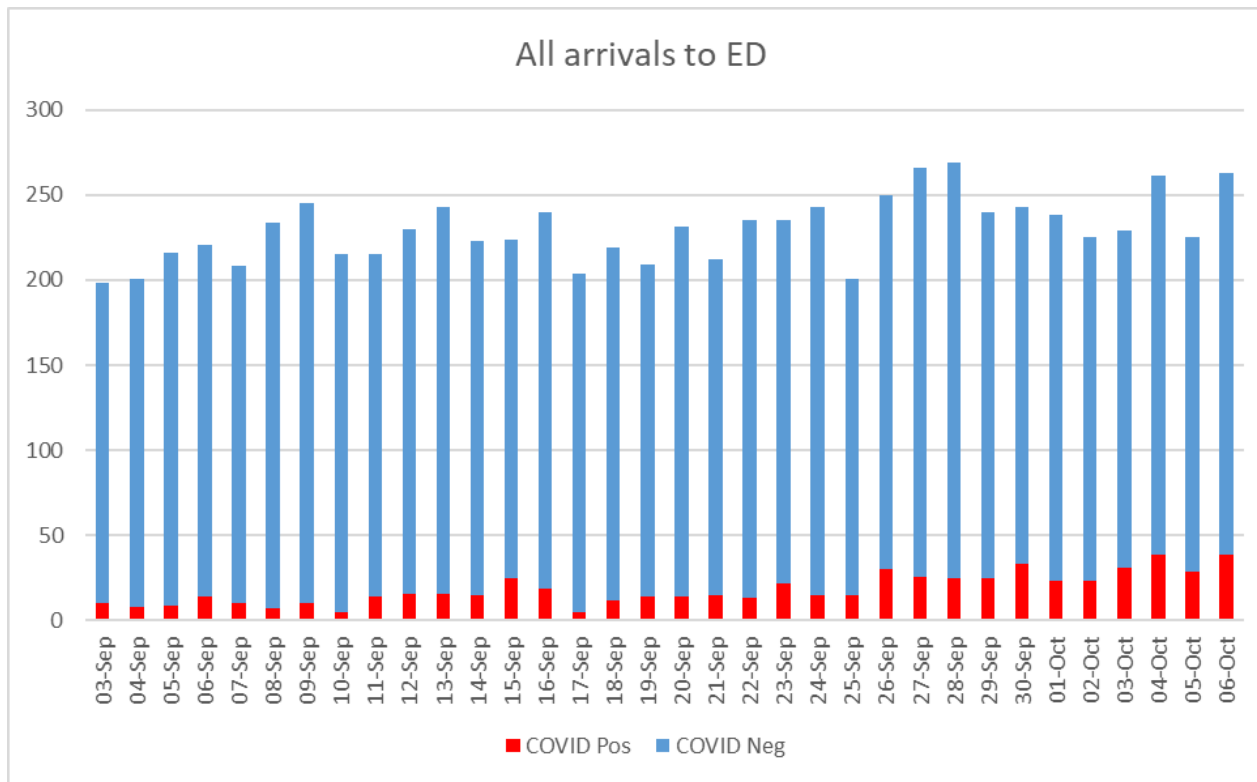
## CSS, RAT and CNN

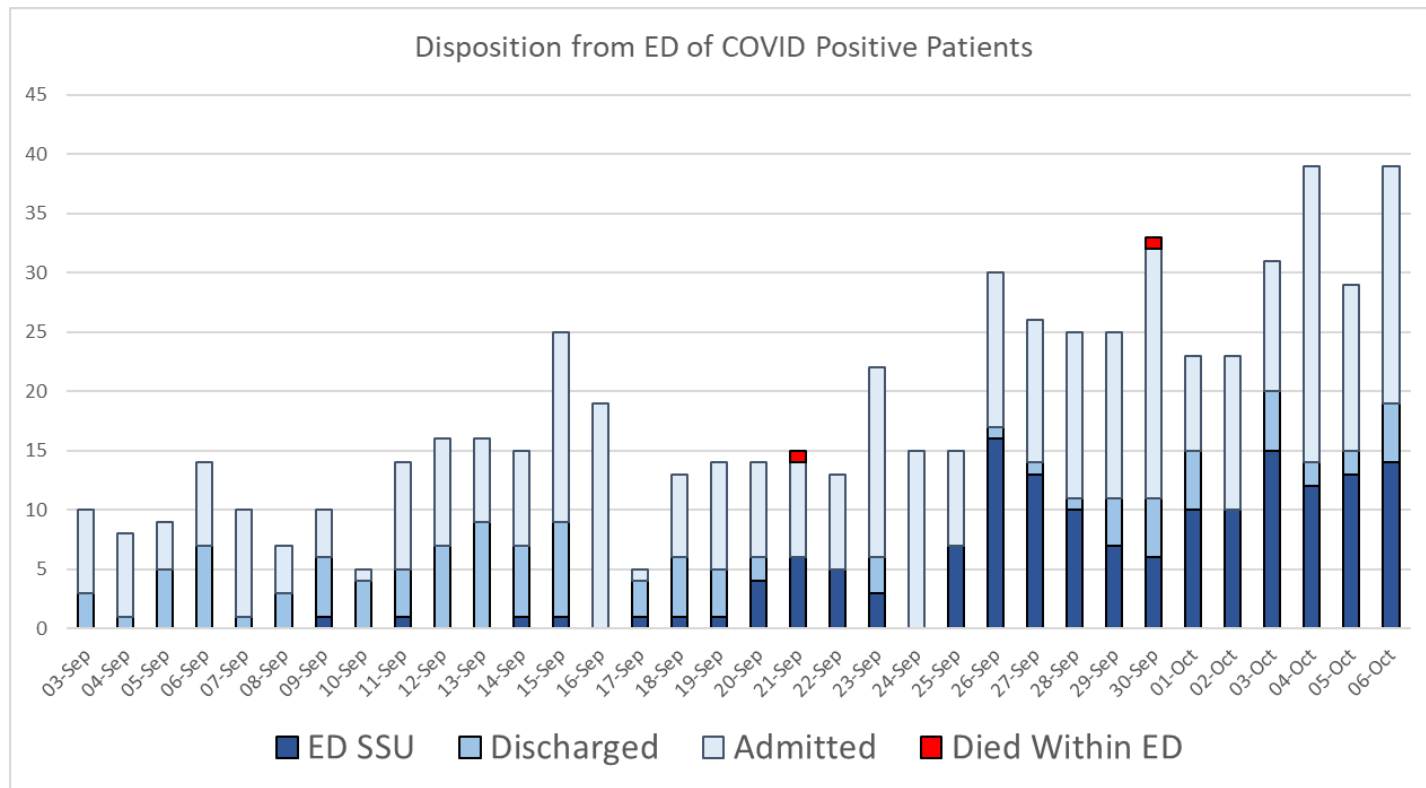
Assoc. Prof. Mark Putland  
Director, Department of Emergency Medicine - RMH

13 October 2021

- Pathway intake is challenged
- Hotel Quarantine filling-up
- Transport home is challenging
- COVID is looking pretty binary
  - *Pneumonitis or not*
- Dischargeable patients have little experience of illness







# COVID SS

- 8 beds with room to grow
- Cohorting
- Admission criteria
- Clear goals
- Opportunity for Sotrovimab
- Discharge planning and transport main issues
- Suitable for non-ED staff

# CCNs

- 125 referrals in first 14 days  
(starting at 4 and peaking at 20)
- Allied health staff redeployed
- Discharge planning, transport, linking-in

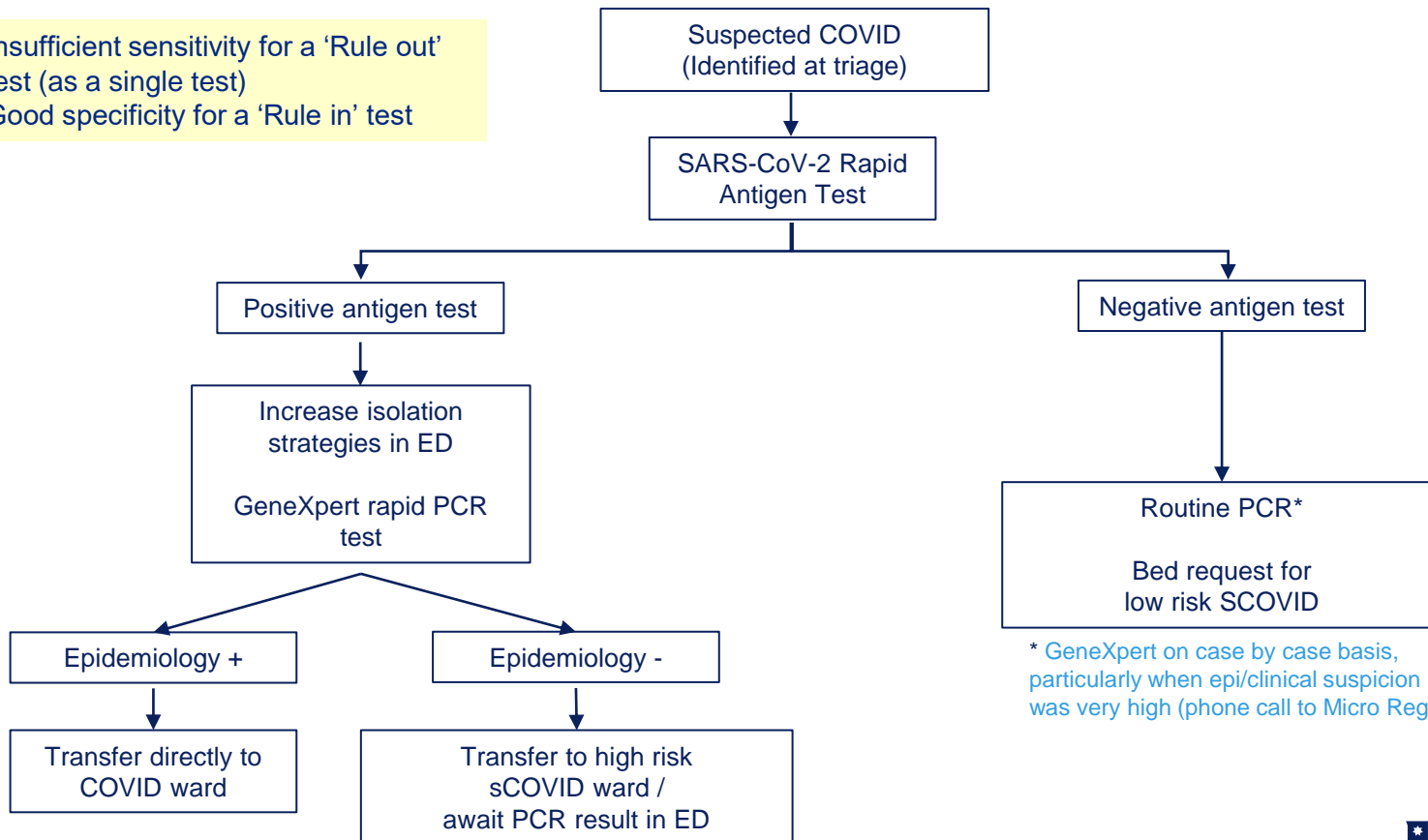
# Rapid Antigen Testing (RAT)

- Abbot Panbio
- 15 minutes
- Second swab
- 100% specific so far
- Sensitivity depends on the patient ~50-85%
- Used as rule in, not rule out



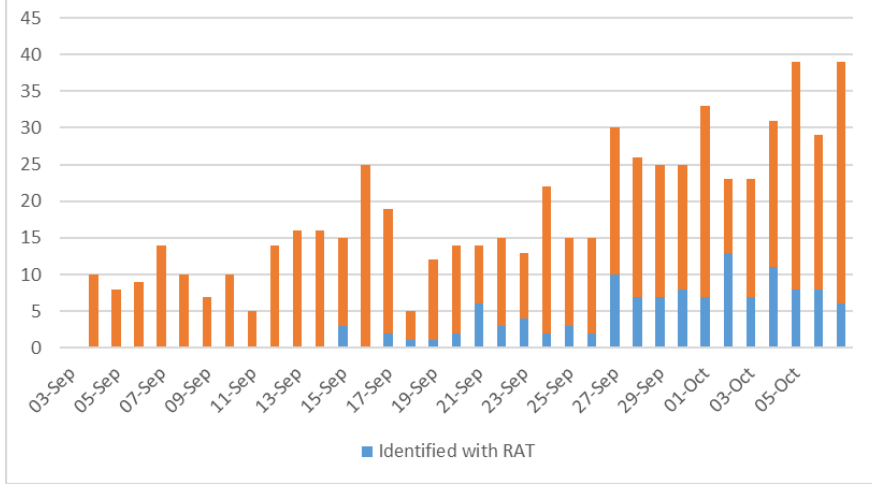
# Implementation Protocol

- Insufficient sensitivity for a 'Rule out' test (as a single test)
- Good specificity for a 'Rule in' test

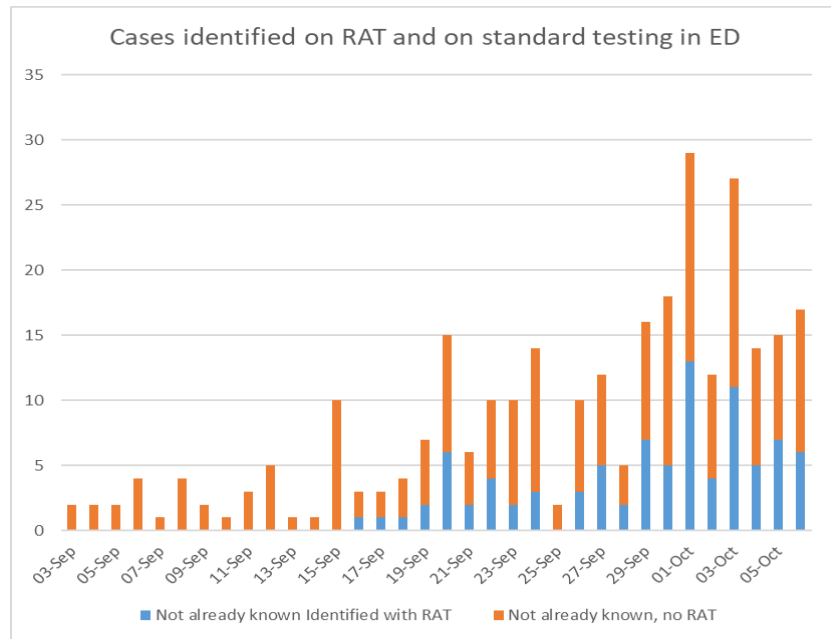


\* GeneXpert on case by case basis, particularly when epi/clinical suspicion was very high (phone call to Micro Reg)

COVID positive cases detected with RAT



Cases identified on RAT and on standard testing in ED



**Thank you**



---

# Questions

**Please type your question in the chat**

---

## Survey

Please complete our short survey to help us identify future topics for the COVID + Pathway Learning Network webinar series.

[Survey](#)

---

## Future webinars

- Interested in sharing your services' experiences, innovations and learnings in delivering the COVID+ Pathway at an upcoming webinar?
- Did not receive this webinar invite directly and would like to register for future webinars?

Email us:

[centresofclinicaexcellence@safercare.vic.gov.au](mailto:centresofclinicaexcellence@safercare.vic.gov.au)