

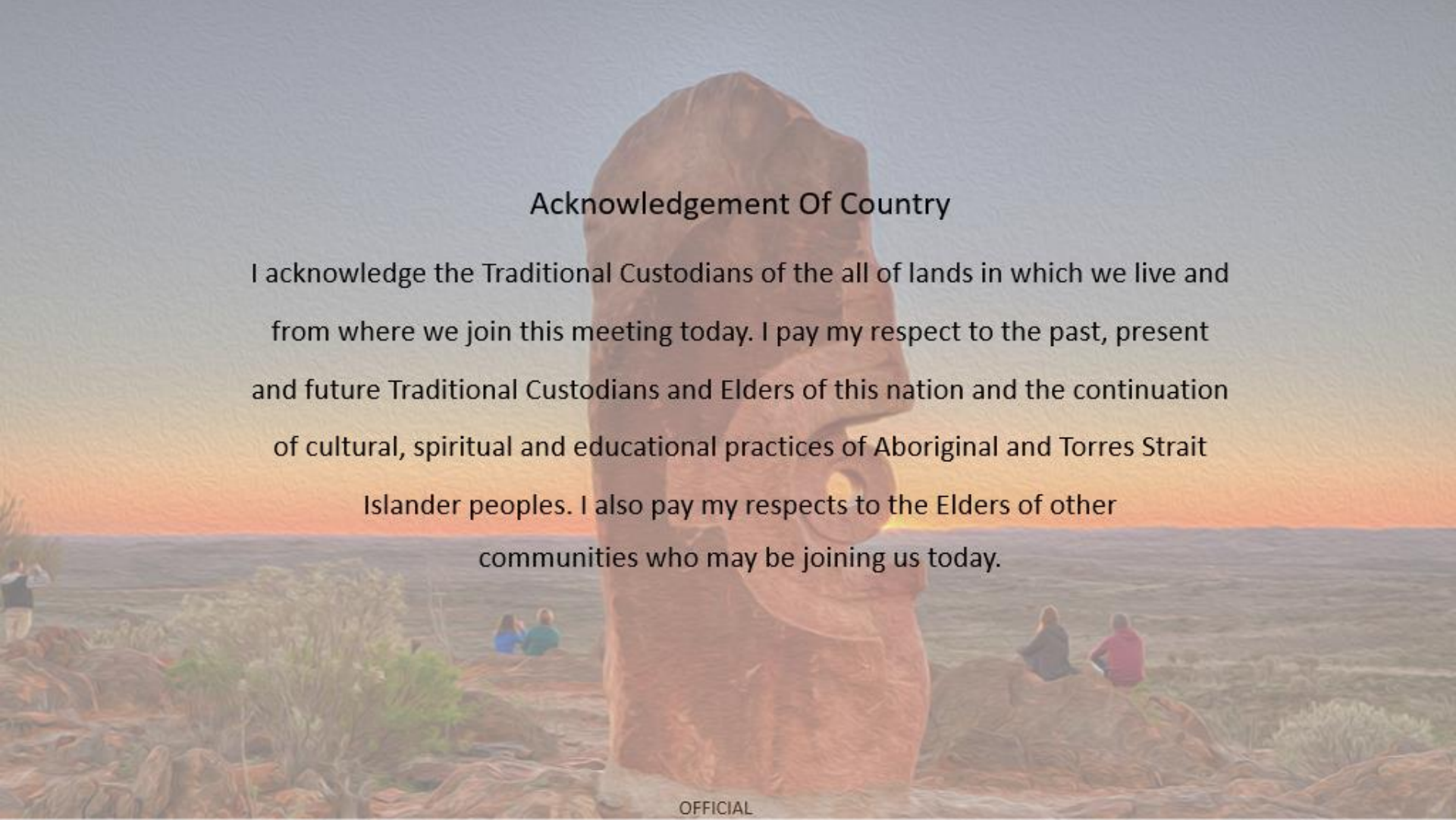
Wednesday 3 November, 2021

---

# COVID + Pathway Learning Network webinar series

Webinar 6: Hear from Barwon Health

**OFFICIAL**



## Acknowledgement Of Country

I acknowledge the Traditional Custodians of the all of lands in which we live and from where we join this meeting today. I pay my respect to the past, present and future Traditional Custodians and Elders of this nation and the continuation of cultural, spiritual and educational practices of Aboriginal and Torres Strait Islander peoples. I also pay my respects to the Elders of other communities who may be joining us today.

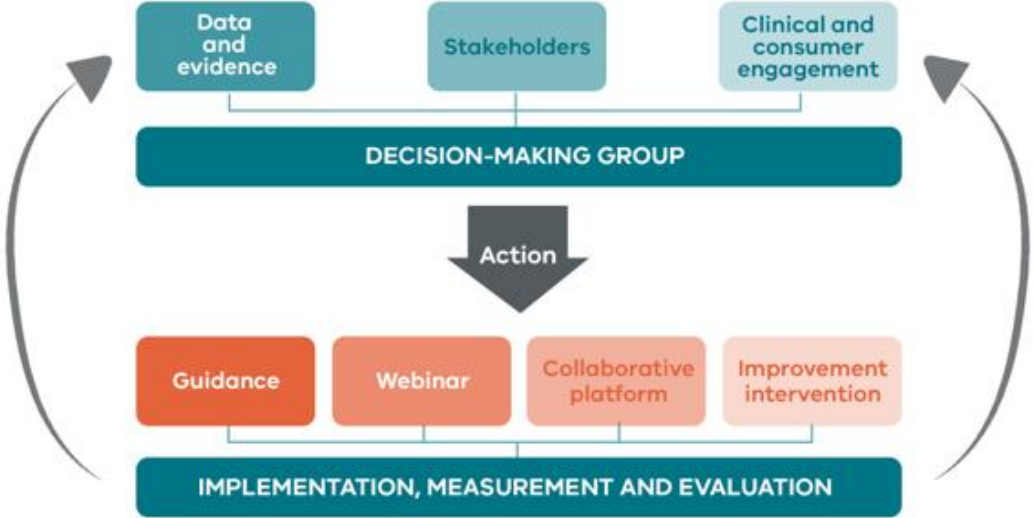
---

## Webinar series purpose

- Showcase local clinicians who will share their experiences delivering the COVID + Pathways model
- Provide a forum for sharing and collaboration to support the delivery of best practice
- \* To share your services' experiences, innovations and learnings in delivering the COVID+ Pathway at an upcoming webinar email [centresofclinicaexcellence@safercare.vic.gov.au](mailto:centresofclinicaexcellence@safercare.vic.gov.au)

---

# COVID + Pathway Learning Network

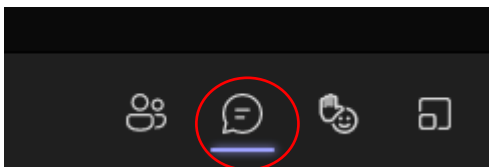


**OFFICIAL**

---

## Before we start

Throughout the webinar you can ask questions by typing your question into the chat.



There will also be a dedicated time for questions and discussions.

The presenters will do their best to answer your questions at the end of the presentation.

This session will be recorded and made available on the SCV website <https://www.bettersafecare.vic.gov.au/support-training/learning-networks/covid-pathways>

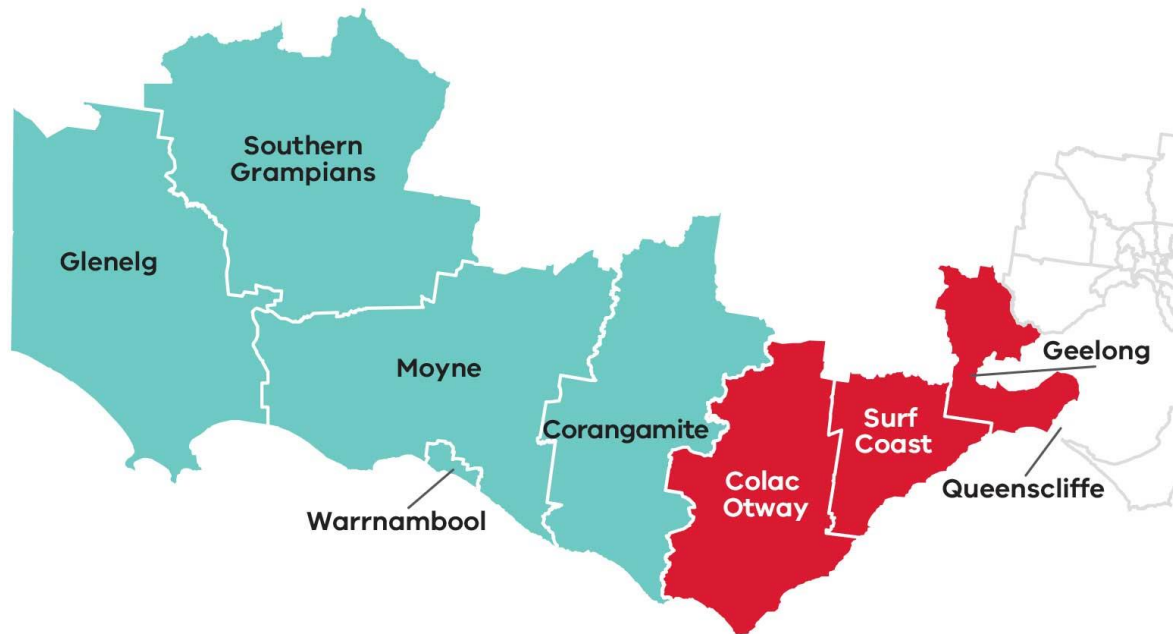
---

# Overview

Topic	Presenter
<b>Hear from Barwon Health</b>	<b>David Meade</b> Co Director Community Health, Rehabilitation and Palliative Care Barwon Health
<b>Questions</b>	
<b>COVID + Pathway update</b>	<b>Shannon Wight</b> Executive Director, COVID + Pathways, Department of Health
<b>Questions</b>	

# COVID + Pathways Barwon South West

David Meade





- **Built upon previous work** – Barwon Health was one of the first health services in the state to introduce Remote Patient Monitoring (RPM) into standard care, firstly in chronic disease and more recently in the improved management of Heart Failure. Managing COVID positive patients through this platform was a logical progression. Utilised in wave one last year, further learnings built into wave two response.
- **Use a proprietary platform** - Support two western hubs at South West Healthcare (Warrnambool), Western District Health Service (Hamilton). Also have agreements with local rural health services to deliver and pick up equipment as well as provide local on ground clinical support where required.



# Current Processes

- All referrals received via PHU, risk stratified H/M/L/VL
- In rural setting also important to consider geographic location in setting of risk
- All high and medium risk clients delivered pulse ox and thermometer.
- **High risk** – twice daily calls + biometrics
- **Medium risk** – once daily calls + biometrics
- **Low risk** – once daily call every three days
- **Very low risk** – very low touch, used in settings of primary school cases health literate parents etc.
- All medical escalations back to ID physicians/Registrars in PHU...increase monitoring, admission
- No surprises



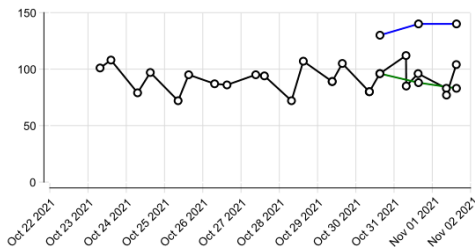
# Current Processes (cont'd)

- All medical escalations back to ID Physicians/Registrars in PHU...increase monitoring, admission
- No surprises

Heart Rate (bpm)

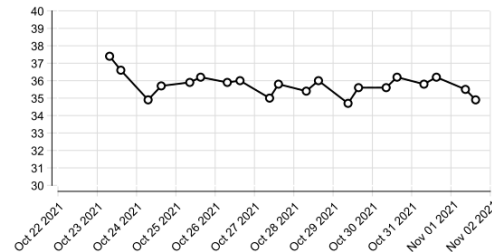
Limits and Alerts: Alert Limit: between 50 and 120 Marginal Limit: between 60 and 100

■ Sitting  
■ Standing



Temperature (C)

Limits and Alerts: Alert Limit: between 34.0 and 40.0 Marginal Limit: between 35.0 and 38.0



# Current Challenges

- Workforce
- Unwilling / unable to engage clients
- Clinical and compliance escalations...lack of closed loop feedback.
- Accommodation



---

# Questions

**Please type your question in the chat**

---

# COVID + Pathways update

**Shannon Wight**– Executive Director, COVID + Pathways Program  
& Executive Director Clinical Operations, Eastern Health

---

# Questions

**Please type your question in the chat**

---

## Survey

Please complete our short survey to help us identify future topics for the COVID + Pathway Learning Network webinar series.

[Survey](#)



---

## Resources

- Learning Network webinar recordings and slides  
<https://www.bettersafecare.vic.gov.au/support-training/learning-networks/covid-pathways>

---

## Get in contact

- To register for future webinars email us:  
[centresofclinicaexcellence@safercare.vic.gov.au](mailto:centresofclinicaexcellence@safercare.vic.gov.au)
- If you have specific questions relating to the COVID+ Pathways please email the Department of Health at  
[covid+pathways@health.vic.gov.au](mailto:covid+pathways@health.vic.gov.au)